



**KING EDWARD VI
FOUNDATION
BIRMINGHAM**

Educational excellence for our City

Parent Information Session

Wednesday 10th April 2024

Hillstone Primary School

“To make Birmingham the best place to be educated in the UK”



**KING EDWARD VI
ACADEMY TRUST
BIRMINGHAM**

Educational excellence for our City

Introductions

Grace Cousens

Associate Director of Access & Participation at King Edward VI Foundation

Jeni Butler

Head of Growth & Participation at King Edward VI Foundation

Nadia Joseph

School Partnerships Officer at King Edward VI Foundation

Sophie Lester

*Head of Art and Foundation Lead in Education at King Edward VI
Handsworth School for Girls*

Amy Hannah

Communications Manager at King Edward VI Foundation

To make Birmingham the best place to be educated in the UK



KING EDWARD VI
FOUNDATION
BIRMINGHAM

Educational excellence for our City



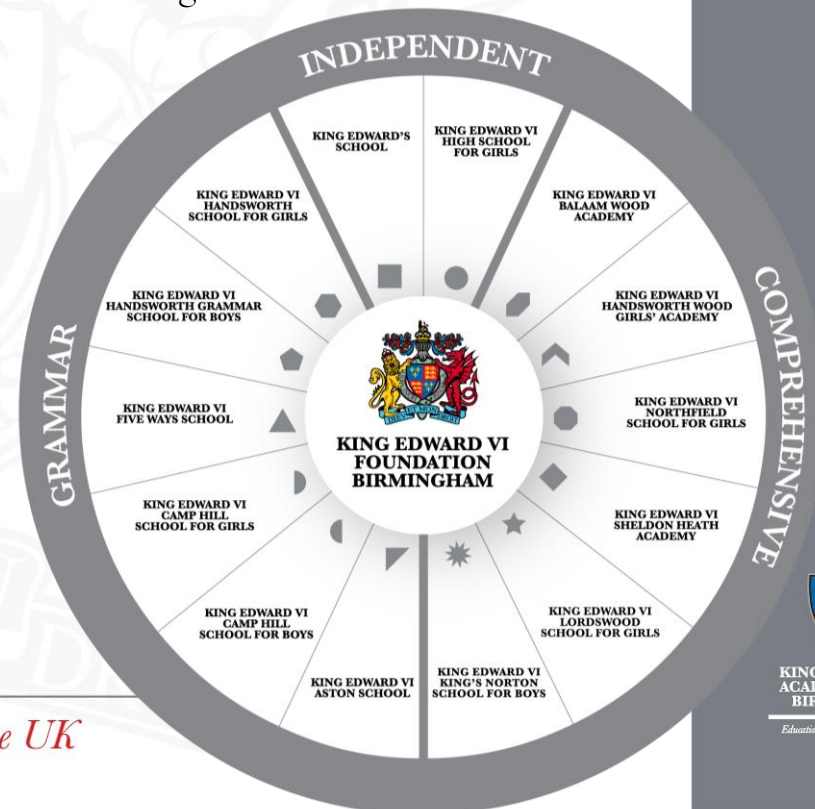
KING EDWARD VI
ACADEMY TRUST
BIRMINGHAM

Educational excellence for our City

King Edward VI Foundation

Who we are, our mission and values

- 14 secondary schools across Birmingham
- 2 Independent, 6 Grammar, 6 Comprehensive
- Represent the multi-cultural and diverse population of the City
- Our mission is to ensure all children, no matter their background can access our schools



**KING EDWARD VI
FOUNDATION
BIRMINGHAM**

Educational excellence for our City



**KING EDWARD VI
ACADEMY TRUST
BIRMINGHAM**

Educational excellence for our City

To make Birmingham the best place to be educated in the UK

Grammar School selection process



Admissions policy

1. **Looked After Children / Previously Looked After Children** who achieve the qualifying score. Applicants in this category will be ranked by test score and then by distance from the school.
2. Children attracting the **Pupil Premium** who achieve the qualifying score and live **within the school catchment area**. Applicants in this category will be ranked by distance from the school.
3. **If fewer than XX places** (25% of the PAN) are filled by applicants in category 2, offers will be made to children attracting the **Pupil Premium** who achieve the qualifying score and live **outside the catchment area**, until a total of XX children attracting the Pupil Premium have been offered. If XX or more places are filled by applicants in category 2, there will be no offers made from this category. Applicants in this category will be ranked by test score. Where scores are equal, priority will be given to those with a sibling at the school; then by distance from the school.
4. Applicants who achieve the **priority score** and live **within the school catchment area**. Applicants in this category will be given priority if they have an older sibling at the school; then ranked by distance from the school.
5. Applicants achieving the qualifying score. Applicants in this category will be **ranked by test score**. Where scores are equal, priority will be given to those with a sibling at the school; then ranked by distance from the school.

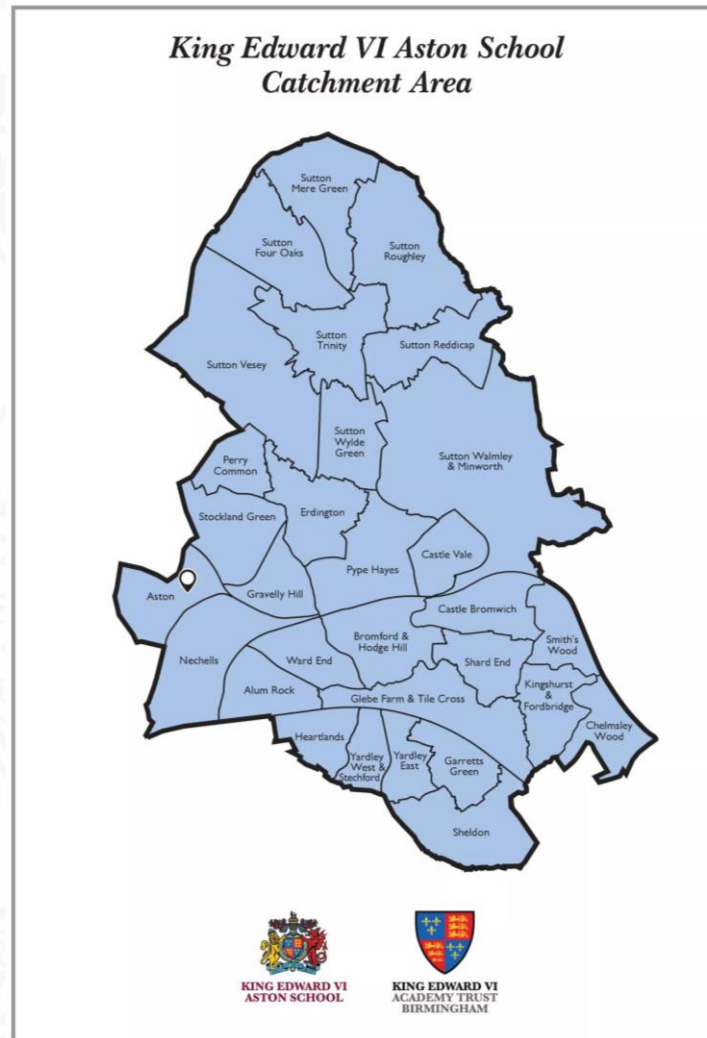


Catchment area maps



**KING EDWARD VI
FOUNDATION
BIRMINGHAM**

Educational excellence for our City



To make Birmingham the best place to be educated in the UK



**KING EDWARD VI
ACADEMY TRUST
BIRMINGHAM**

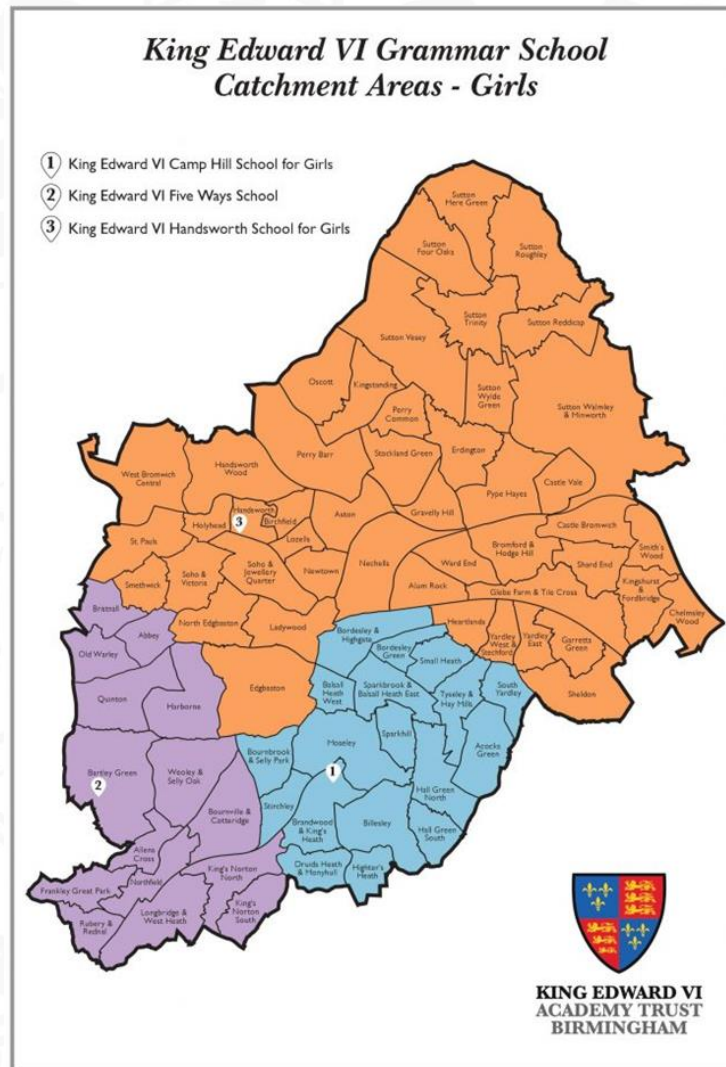
Educational excellence for our City

Catchment area maps



**KING EDWARD VI
FOUNDATION
BIRMINGHAM**

Educational excellence for our City



**KING EDWARD VI
ACADEMY TRUST
BIRMINGHAM**

Educational excellence for our City

To make Birmingham the best place to be educated in the UK

Question: “Why does the Foundation prioritise children eligible for the Pupil Premium?”

- Nationally, children from the lowest income homes do not perform as well in school as other children. This is not because they are less able; it is because they are disadvantaged and there are fewer opportunities available to them.
- The government uses Pupil Premium to determine which children are from the lowest income families. We are bound to use this same criteria.
- Across the country, this means that able children from the lowest income homes do not often get the chance to go to a grammar school.
- Our mission is to provide equal educational opportunities to children regardless of background. Our qualifying score helps ensure fair access to grammar schools for the most able pupils from the lowest income homes.
- Regardless of whether your child is eligible for Pupil Premium, the number of places available means that able pupils from all backgrounds have a fair chance of gaining entry to our grammar schools.

To make Birmingham the best place to be educated in the UK



KING EDWARD VI
FOUNDATION
BIRMINGHAM

Educational excellence for our City



KING EDWARD VI
ACADEMY TRUST
BIRMINGHAM

Educational excellence for our City

Question: “What is the test scored out of?”

- The scores for each section are standardised to take into account differences in age, meaning younger children are not disadvantaged compared to children in the same cohort who could be almost a year older.
- You will receive your child’s total standardised score and providing they achieve the Qualifying Score (which is set prior to the entrance test and has been 205 in previous years) will be eligible to apply and be considered for places at the grammar schools.
- *Only the total standardised score* is used when considering applications and therefore we do not provide raw scores and the test provider does not permit us to publish information relating to the number of questions in the test or the highest achievable score.
- Many children are anxious about sitting tests - you can help by not putting pressure on your child and encouraging them to simply do their best.

To make Birmingham the best place to be educated in the UK



KING EDWARD VI
FOUNDATION
BIRMINGHAM

Educational excellence for our City



KING EDWARD VI
ACADEMY TRUST
BIRMINGHAM

Educational excellence for our City

Top tips

- Register for the Entrance Test on time
- Check the admissions policy for each school that you are interested in
- Once you know if your child has achieved the qualifying score, apply on time
- Think about transport arrangements
- Use the familiarisation questions available online at <https://11plus.gl-assessment.co.uk/free-materials/>.

To make Birmingham the best place to be educated in the UK



KING EDWARD VI
FOUNDATION
BIRMINGHAM

Educational excellence for our City



KING EDWARD VI
ACADEMY TRUST
BIRMINGHAM

Educational excellence for our City



Familiarisation – What does the test look like?

Children take two separate papers over the course of the day, with both papers including a range of questions involving English, Maths, Verbal Reasoning and Non-Verbal Reasoning.

SAMPLE QUESTION 1

How does the narrator know that it won't be good news when the doorbell rings?

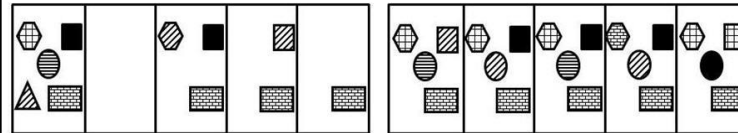
- A. Because it is early in the morning
- B. Because there are police at the door
- C. Because Alex's uncle has not yet come home
- D. Because Alex has experienced this before
- E. Because the housekeeper answers the door in a panic

In these questions, the same letter will fit into both sets of brackets, to end the word in front of the brackets and start the word after the brackets.

Example:

blas [t] reason shor [t] rip

1) clas [] lay clam [] ine



a b c d e

SAMPLE QUESTION 1

Put brackets into the following sum to make it correct.
 $2 \times 4 + 60 \div 4 - 8 \times 2 = 16$

- [A] $2 \times 4 + 60 \div (4 - 8) \times 2 = 16$
- [B] $(2 \times 4 + 60) \div 4 - 8 \times 2 = 16$
- [C] $2 \times 4 + 60 \div (4 - 8 \times 2) = 16$
- [D] $2 \times (4 + 60) \div 4 - 8 \times 2 = 16$
- [E] $2 \times (4 + 60 \div 4) - 8 \times 2 = 16$

Example:

Monday Tuesday Friday midnight noon midnight and noon

7) march August walk run swim _____ and _____

8) damp moist dry drink wet _____ and _____

9) calm neat cool warm placid _____ and _____

10) locate look find discover lost _____ and _____

11) jolly angry annoyed happy cheerful _____ and _____

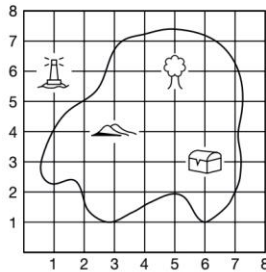
12) smart clever stupid understand intelligent _____ and _____





Familiarisation – What does the test look like?

4



The hills are at (3, 4).

The lighthouse is at (,).

- A (6, 1)
- B (1, 6)
- C (5, 6)
- D (6, 3)
- E (1, 7)

5

What is the missing number in this sequence?

393 384 375 357

- A 367
- B 368
- C 365
- D 369
- E 366

6



How many of the triangles will fill the hexagon?

- A 10
- B 9
- C 8
- D 6
- E 4

FAMILIARISATION ANSWER SHEET - MATHEMATICS 1



Candidate's Name

School Name

DATE OF TEST

Day Month Year

CANDIDATE NUMBER

SCHOOL NUMBER

DATE OF BIRTH

Day Month Year

Please mark boxes with a thin horizontal line like this —.

1 5190 5019 519 51009 5109	2 0.5 1 3 4 6	3 7 thousands 7 hundreds 7 tens 7 ones 7 thousandths	4 (6, 1) (1, 8) (5, 6) (6, 3) (1, 7)	5 367 368 365 369 366	6 10 9 8 6 4	7 1.45 m 1.83 m 1.65 m 1.405 m 1.603 m	8 3/5 1/5 1/4 1/4 3/5	9 123 9 0.1 0.5 1
10 19 -1 21 -19	11 0.31 0.251 400 ml 0.35 l 200 ml	12 6.5 hours 7 hours 7.5 hours 8 hours 8.5 hours	13 4 weeks 8 weeks 9 weeks 10 weeks 14 weeks	14 12 15 18 21 24	15 7:15 7:25 19:25 19:15 21:15	16 3 7 10 12 14	17 45 mins 55 mins 65 mins 75 mins 95 mins	18 £82.00 £82.63 £82.00 £81.50 £86.50
19 30 millilitres 3 litres 30 litres 300 litres	20 A B C D E	21 6 mins 10 mins 13 mins 18 mins 26 mins	22 1% 5% 10% 20% 50%	23 2 weeks 3 weeks 4 weeks 7 weeks 8 weeks	24 A B C D E	25 A B C D E	26 4 5 6 7 15	27 4 2 5 1 3
28 £2.80 £3.40 £3.50 £4.20 £4.40	29 0.36 0.036 36 360 36.6	30 1850 1875 1895 1900 1910	31 12 16 22 24 26	32 3168 3173 7920 7925 7950	33 A B C D E	34 37.8°C 47.5°C 34.5°C 37.2°C 40.5°C	35 7/8 1/4 1/4 1/4 1/4 7/8 1/4 1/4 1/4 1/4 7/8 1/4 1/4 1/4 1/4 7/8 1/4 1/4 1/4 1/4	
36 4 kg 4.5 kg 40 kg 4000 kg 4500 kg	37 5 6 9 16 27	38 21 boys 18 boys 16 boys 14 boys 9 boys	39 5 25 27 27.5 30	40 9 12 15 16 18	41 CMLXXXIV MLXVI DCCCLXXXIV MCDLXIV MDLXXXVI	42 A B C D E	43 10.5 m 75 cm 150 cm 5.25 m 125 cm	44 A B C D E
45 2 hours 4 hours 6 hours 8 hours 10 hours	46 27 37 127 137 687	47 bicycle bus car train walk	48 1/2 1/2 1/4 1/2 1/4	49 2.25 kg 1.25 kg 1.8 kg 2.7 kg 1.35 kg	50 20 litres 34 litres 1.5 litres 4 litres 2 litres			



Support for children eligible for the Pupil Premium

- *We want all children, irrespective of their background, to feel as prepared as possible for the Entrance Test.*
- When you register for the test, if you tick the box to indicate that your child qualifies for the Pupil Premium, you will automatically receive login details to give you access to the Atom Home platform, where your child can practise.
- However, if your child qualifies for Pupil Premium, you do not need to wait until you have registered for the test before accessing this familiarisation content.
- Please talk to a member of our team after the session to find out more.



**KING EDWARD VI
FOUNDATION
BIRMINGHAM**

Educational excellence for our City



**KING EDWARD VI
ACADEMY TRUST
BIRMINGHAM**

Educational excellence for our City





To make Birmingham the best place to be educated in the UK

Dates for your diary



**KING EDWARD VI
FOUNDATION
BIRMINGHAM**

Educational excellence for our City

8 May 2024 Test registration opens 	14 Jun 2024 Reasonable adjustments deadline	28 Jun 2024 Test registration deadline 4:00pm 	Sept 2024 Test information
14 Sept 2024 Entrance test	18 Oct 2024 Results 	31 Oct 2024 Preference form deadline	3 March 2025 School offer 


Date applies to
Grammar Schools


Date applies
to both

To make Birmingham the best place to be educated in the UK



**KING EDWARD VI
ACADEMY TRUST
BIRMINGHAM**

Educational excellence for our City



**KING EDWARD VI
FOUNDATION
BIRMINGHAM**

Educational excellence for our City

Common misconceptions about the King Edward VI Foundation

To make Birmingham the best place to be educated in the UK



**KING EDWARD VI
ACADEMY TRUST
BIRMINGHAM**

Educational excellence for our City

Common misconceptions

“All of our schools require parents to pay fees”

To make Birmingham the best place to be educated in the UK



**KING EDWARD VI
FOUNDATION
BIRMINGHAM**

Educational excellence for our City



**KING EDWARD VI
ACADEMY TRUST
BIRMINGHAM**

Educational excellence for our City

Common misconceptions



**KING EDWARD VI
FOUNDATION
BIRMINGHAM**

Educational excellence for our City

*“The King Edward VI Foundation is
elitist”*

To make Birmingham the best place to be educated in the UK



**KING EDWARD VI
ACADEMY TRUST
BIRMINGHAM**

Educational excellence for our City

Common misconceptions

“You have to pass an entrance test to attend any of the Foundation schools”

To make Birmingham the best place to be educated in the UK



**KING EDWARD VI
FOUNDATION
BIRMINGHAM**

Educational excellence for our City



**KING EDWARD VI
ACADEMY TRUST
BIRMINGHAM**

Educational excellence for our City

Common misconceptions

*“You need to be coached or tutored
to pass the entrance test”*

To make Birmingham the best place to be educated in the UK



**KING EDWARD VI
FOUNDATION
BIRMINGHAM**

Educational excellence for our City



**KING EDWARD VI
ACADEMY TRUST
BIRMINGHAM**

Educational excellence for our City

Common misconceptions

“Foundation schools only care about exam results”

To make Birmingham the best place to be educated in the UK



**KING EDWARD VI
FOUNDATION
BIRMINGHAM**

Educational excellence for our City



**KING EDWARD VI
ACADEMY TRUST
BIRMINGHAM**

Educational excellence for our City

Common misconceptions

*“You must live in the catchment area
of a Foundation school to go there”*

To make Birmingham the best place to be educated in the UK



**KING EDWARD VI
FOUNDATION
BIRMINGHAM**

Educational excellence for our City



**KING EDWARD VI
ACADEMY TRUST
BIRMINGHAM**

Educational excellence for our City

What is it like to be a student at a King Edward VI school?



**KING EDWARD VI
FOUNDATION
BIRMINGHAM**

Educational excellence for our City



“To make Birmingham the best place to be educated in the UK”



**KING EDWARD VI
ACADEMY TRUST
BIRMINGHAM**

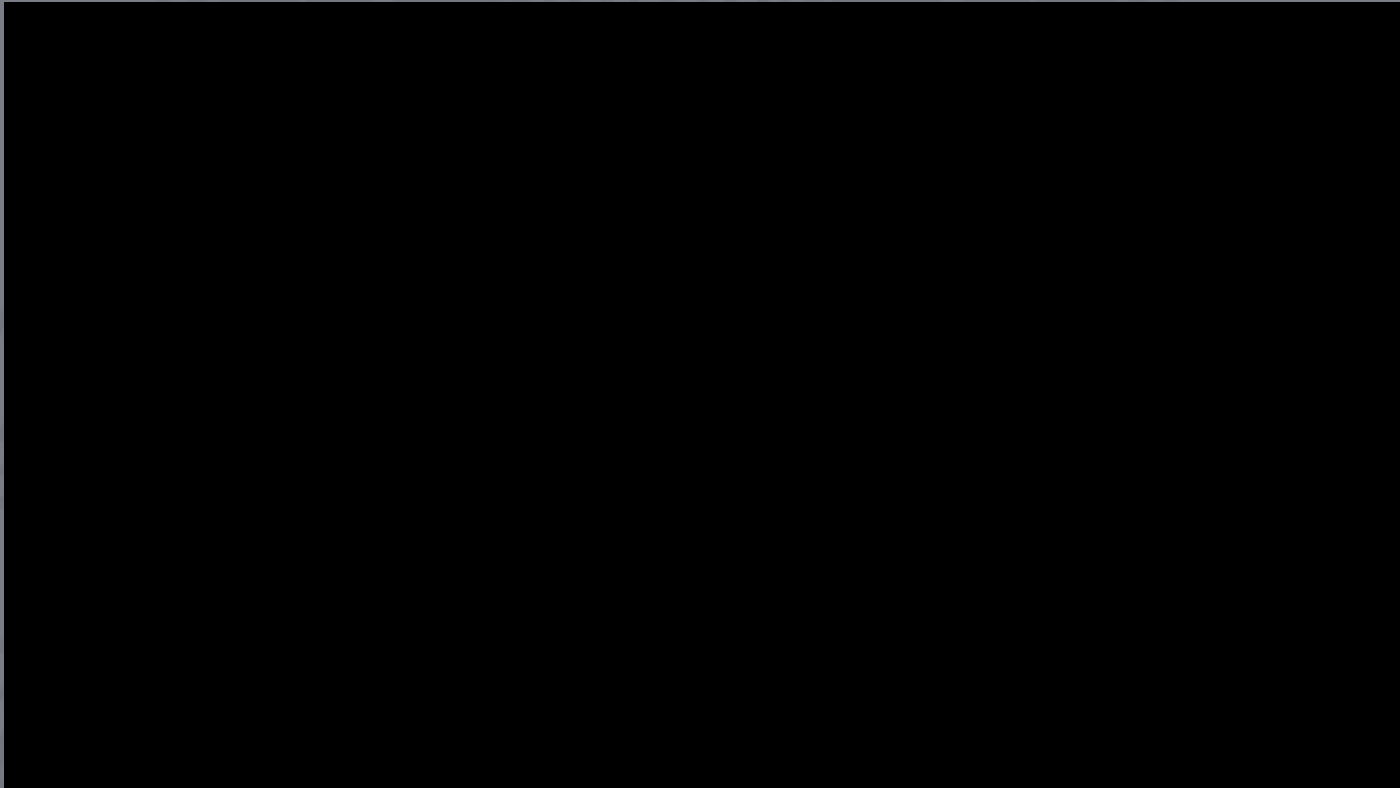
Educational excellence for our City

Tips for Starting Secondary School



**KING EDWARD VI
FOUNDATION
BIRMINGHAM**

Educational excellence for our City



“To make Birmingham the best place to be educated in the UK”



**KING EDWARD VI
ACADEMY TRUST
BIRMINGHAM**

Educational excellence for our City



**KING EDWARD VI
FOUNDATION
BIRMINGHAM**

Educational excellence for our City

*What about
extra-curricular life?*

“To make Birmingham the best place to be educated in the UK”



**KING EDWARD VI
ACADEMY TRUST
BIRMINGHAM**

Educational excellence for our City



**KING EDWARD VI
FOUNDATION
BIRMINGHAM**

Educational excellence for our City

*What support does the King Edward VI
Foundation provide for Year 6s in
advance of starting Year 7?*

“To make Birmingham the best place to be educated in the UK”



**KING EDWARD VI
ACADEMY TRUST
BIRMINGHAM**

Educational excellence for our City



**KING EDWARD VI
FOUNDATION
BIRMINGHAM**

Educational excellence for our City

Please contact the Access and Participation Team if you have any questions following today's session:

Amy Hannah: amy.hannah@kevibham.org

Nadia Joseph: nadia.joseph@kevibham.org

“To make Birmingham the best place to be educated in the UK”



**KING EDWARD VI
ACADEMY TRUST
BIRMINGHAM**

Educational excellence for our City



**KING EDWARD VI
FOUNDATION
BIRMINGHAM**

Educational excellence for our City

*An opportunity for questions with
any member of the team...*

“To make Birmingham the best place to be educated in the UK”



**KING EDWARD VI
ACADEMY TRUST
BIRMINGHAM**

Educational excellence for our City